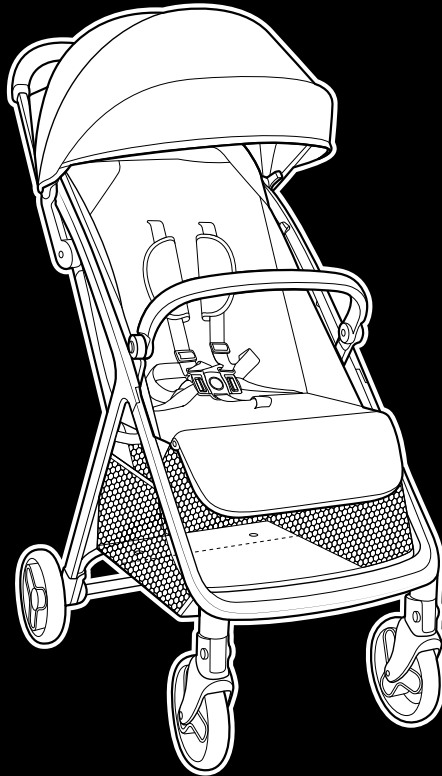




Arris™

INSTRUCTIONS

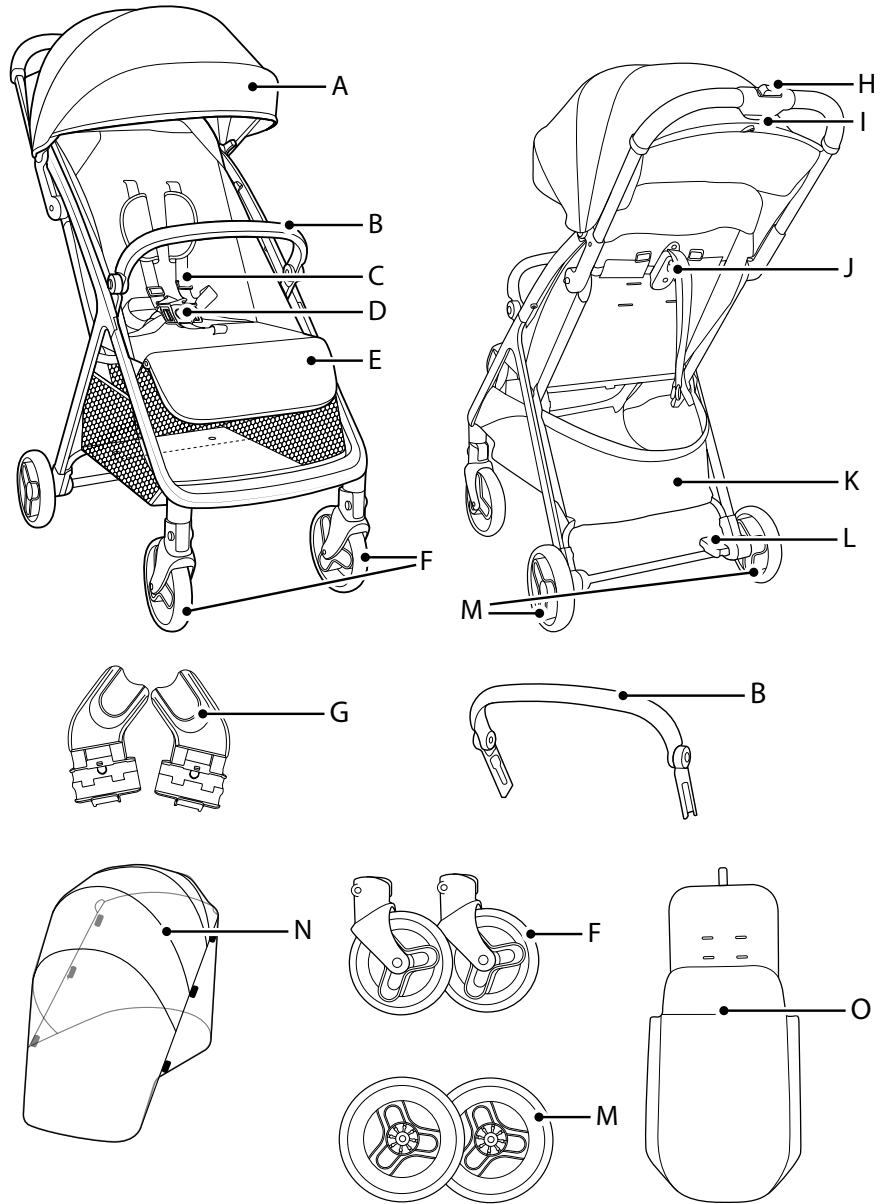


gracobaby.eu • gracobaby.pl

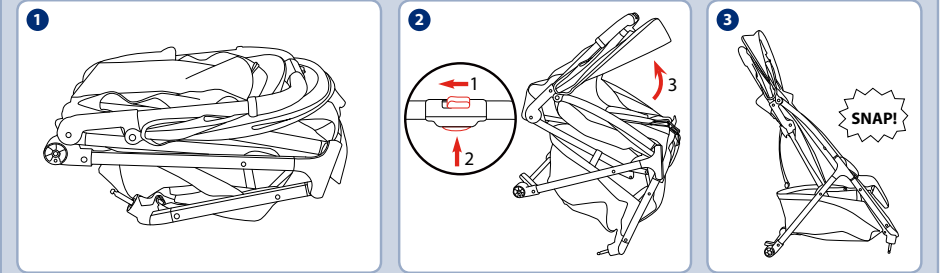
IM-001227E

**IMPORTANT- READ CAREFULLY AND
KEEP FOR FUTURE REFERENCE**

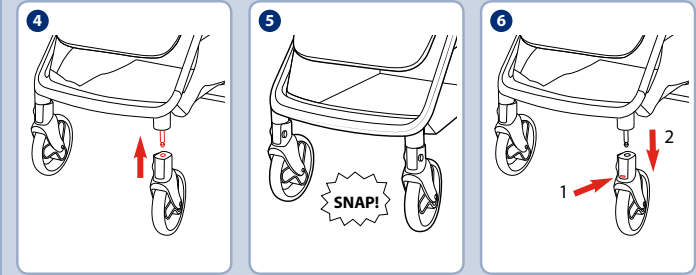
Parts list



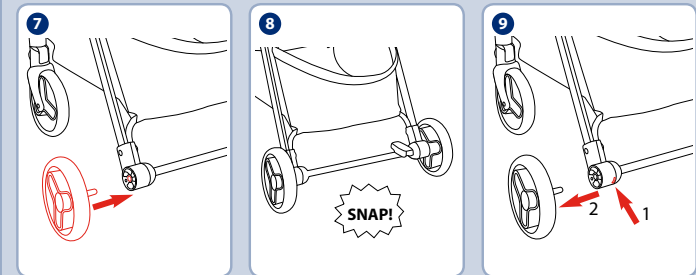
To Open Stroller



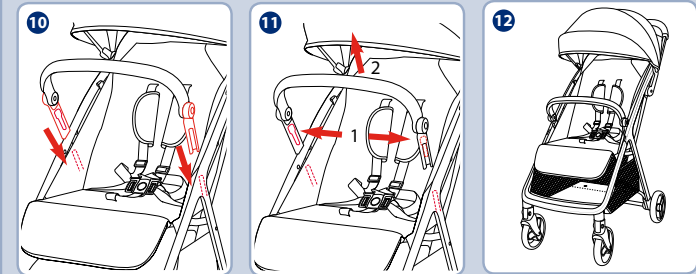
To Attach and Remove Front Wheels



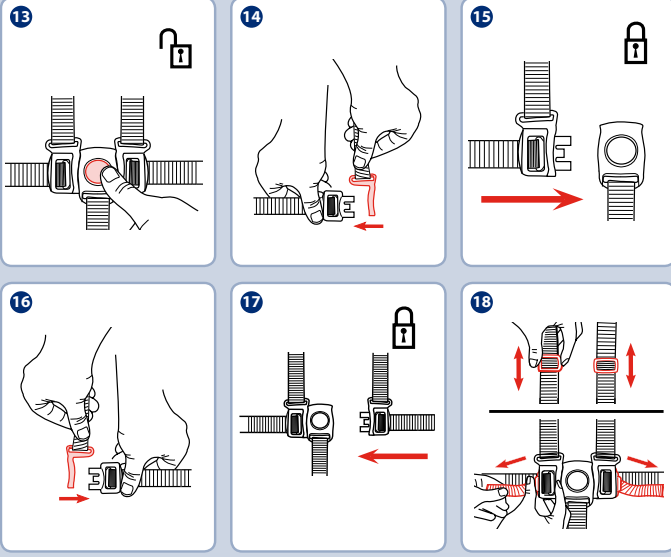
To Attach and Remove Rear Wheels



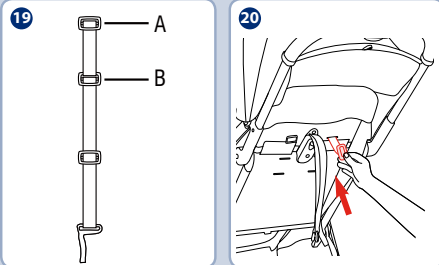
To Attach and Remove Armbar



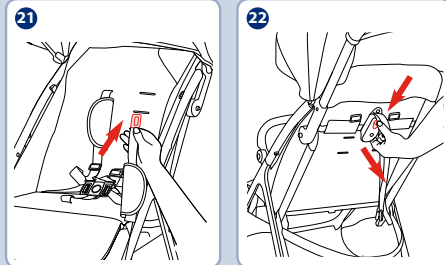
To Secure Child - 5 Point Harness



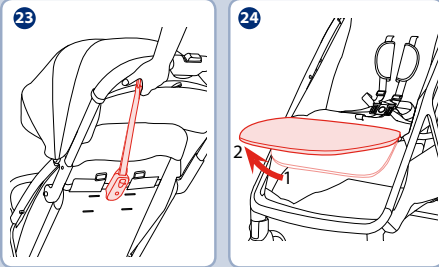
To Adjust Shoulder Harness Position



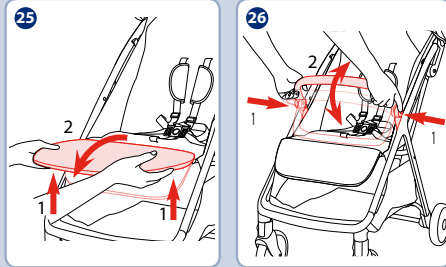
To Recline Backrest



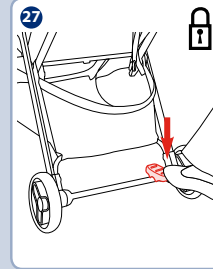
Calf Support



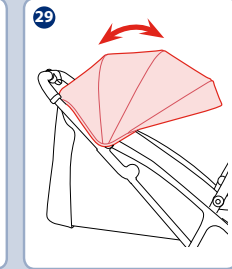
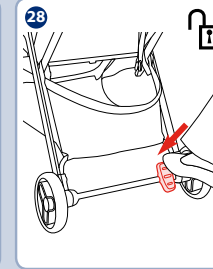
To Use Armbar



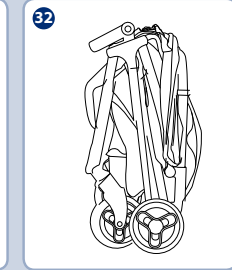
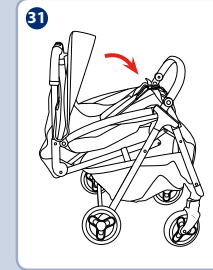
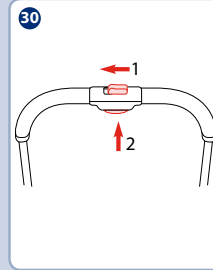
Brake



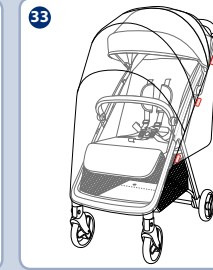
To Use Canopy



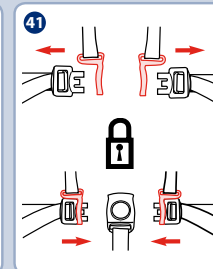
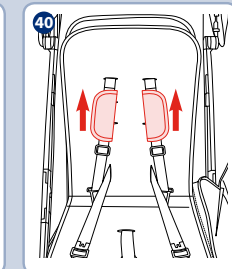
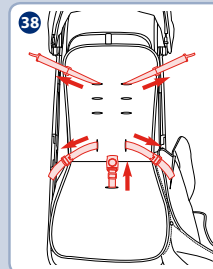
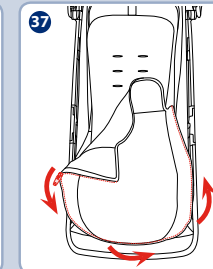
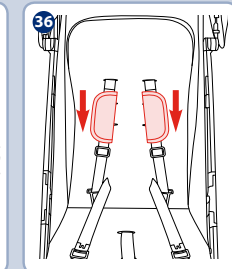
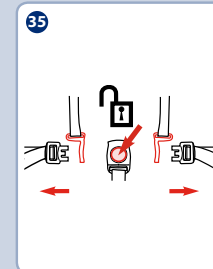
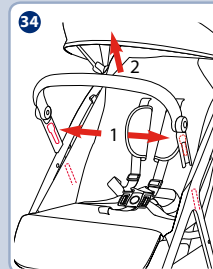
To Fold Stroller

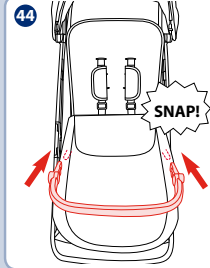
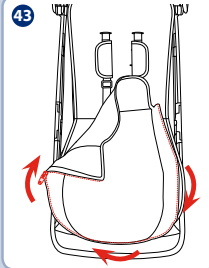
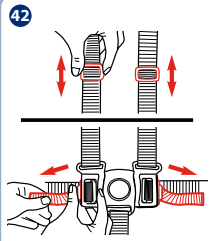


To Use Rain Cover

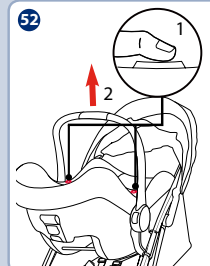
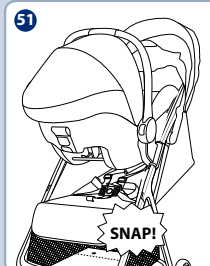
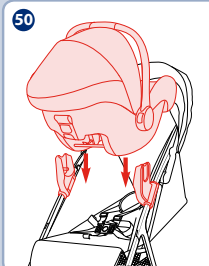
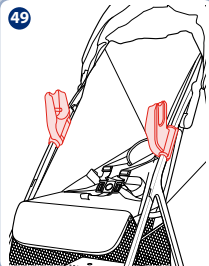
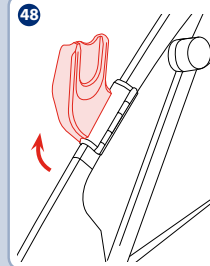
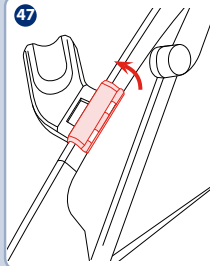
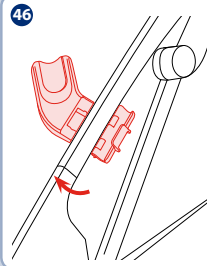
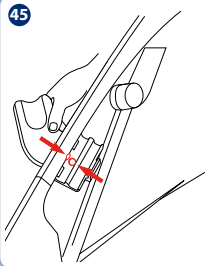


To Attach Footmuff (May Not Be Included)

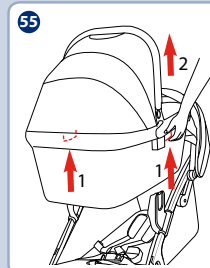
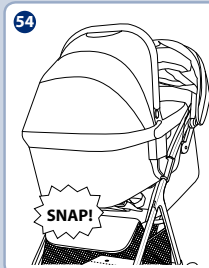
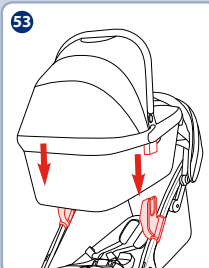




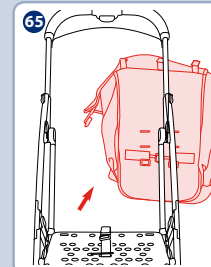
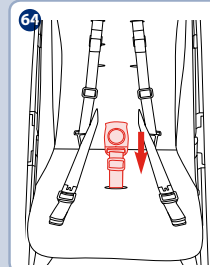
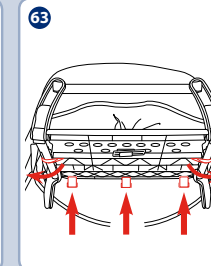
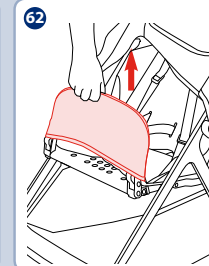
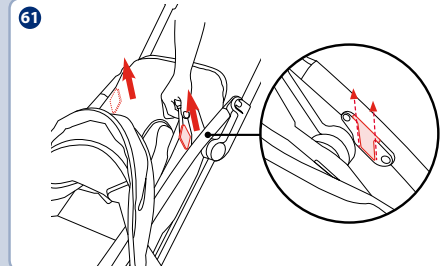
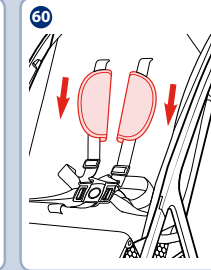
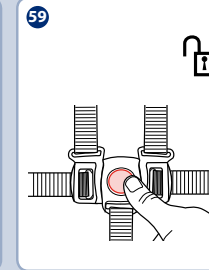
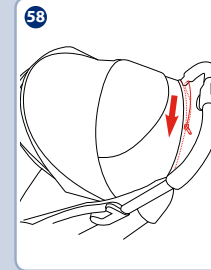
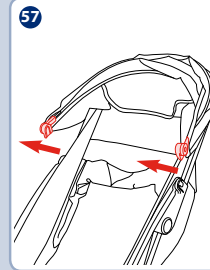
**Use with Graco SnuggLite Infant Child Restraint GC1817
(May Not Be Included)**



**Use with Graco Arris Carry Cot
(May Not Be Included)**



Detach & Assemble Soft Goods



EN  **WARNING**

Complies to
EN 1888-2:2018+A1:2022.

**IMPORTANT - READ CAREFULLY
AND KEEP FOR FUTURE
REFERENCE**

**YOUR CHILD'S SAFETY MAY BE
AFFECTED IF YOU DO NOT FOLLOW
THESE INSTRUCTIONS.**

Always use the restraint system. Safety belts and restraint systems must be used correctly.

Ensure that all the locking devices are engaged before use.

Do not let the child play with this product.

Check that the pram body or car seat attachment devices are correctly engaged before use.

Adult assembly required.

This product is suitable for children up to 22kg or 4 years whichever comes first. It will cause damage to the stroller with an unfitted child.

To prevent a hazardous, unstable condition, do not place more than 4.5kg in the storage basket.

Always keep child in view while in stroller.

Use the stroller with only one child at a time. Never place purses, shopping bags, parcels or accessory items on the handle or canopy.

Accessories which are not approved by the manufacturer shall not be used. Only replacement parts supplied or recommended by the manufacturer/distributor shall be used.

Never use accessories, parts or components not produced or approved by the manufacturer. Please

read the instruction manual carefully. Please read all the instructions in the manual before using the product. Please save instruction manual for future use. Failure to follow these warnings and instructions may result in serious injury or death.

To avoid serious injury from falling or sliding out, always use harness. Make sure your child's body is clear from the moving parts when adjusting the stroller.

Be sure the stroller is fully open or folded before allowing child near the stroller.

Child may slip into leg openings and be strangled if the harness is not used.

Never use stroller on stairs or escalators.

Keep away from high temperature objects, liquids, and electronics.

Never allow your child to stand on the stroller or sit in the stroller with head toward front of stroller.

Never place the stroller on roads, slopes or dangerous areas.

To avoid strangulation, DO NOT place items with a string around your child's neck, suspend strings from this product, or attach strings to toys.

Any load attached to the handle and/or on the back of the backrest and/or on the sides of the vehicle will affect the stability of the vehicle.

DO NOT lift stroller while child is in stroller.

DO NOT use storage basket as a child carrier.

To prevent tipping, never let child climb the stroller. Always lift the child in and out of the stroller.

To avoid finger entrapment, use care when folding and unfolding the stroller.

To avoid injury ensure that the child is kept away when unfolding and folding this product.

To ensure your child's safety, please make sure all parts are assembled and fastened properly before using the stroller.

To avoid strangulation, do make sure your child is clear from the canopy or the rain cover.

Always engage the brakes when parking the stroller.

Discontinue using stroller if it is damaged or broken.

Stroller to be used only at walking speed. This product is not intended for use while jogging.

To avoid suffocation, remove plastic bag and packaging materials before using this product. The plastic bag and packaging materials should then be kept away from babies and children.

This product is not suitable for running or skating.

Pushchair designed to be used from birth shall recommend the use of the most reclined position for new born babies.

The parking device shall be engaged when placing and removing the children.

For car seats used in conjunction with a chassis, this vehicle does not replace a cot or a bed. Should your child need to sleep, then it should be placed in a suitable pram body, cot or bed.

Carry cot shall not be used, as soon as the child is able to sit by himself,

roll over and can push itself up on its hands and knees. Maximum weight of the child: 9kg.

No additional mattress shall be added unless recommended by the manufacturer.

Never leave the child unattended.

CARE & MAINTENANCE

From time to time check your stroller for loose screws, worn parts, torn material or stitching. Replace or repair the parts as needed. Use only Graco® replacement parts.

When using your stroller at the beach, completely clean your stroller afterwards to remove sand and salt from the wheel assemblies.

Discontinue using your stroller should it become damaged or broken.

No bleach, spirit or abrasive cleaners. Allow to dry before storing.

Excessive exposure to the sun could cause premature fading of stroller plastic and fabric.

TO CLEAN Seat Unit PAD: wipe seat unit pad clean with damp cloth.

TO CLEAN Stroller FRAME, use only household soap or detergent and warm water.

Parts list

- A** Canopy
- B** Armbar
- C** Shoulder Harness
- D** Buckle
- E** Calf Support
- F** Front Wheels
- G** Adaptors (May not be included)
- H** Secondary Lock

- I** One-Hand-Fold Handle
- J** Backrest Adjuster
- K** Storage Basket
- L** Brake Lever
- M** Rear Wheels
- N** Rain Cover
- O** Footmuff (May not be included)

Product Set Up

Please read all the instructions in this manual before assembling and using this product.

To Open Stroller

See images **1** - **3**

- Check the stroller frame is completely latched open before continuing.

To Attach and Remove Front Wheels

See images **4** - **6**

To Attach and Remove Rear Wheels

See images **7** - **9**

To Attach and Remove Armbar

See images **10** - **11**

The completely assembled stroller is shown as **12**

Product Use

To Secure Child - 5 Point Harness

See images **13** - **18**

- To avoid serious injury from falling or sliding out, always secure your child with harness.

- DO NOT cross the shoulder belts. This will cause pressure on child's neck.
- Make sure the harness is adjusted properly and your child is snugly secured. The space between the child and the shoulder harness should be about the thickness of one finger.

To Adjust Shoulder Harness Position

See images **19** - **21**

- For larger child, use shoulder harness anchor A and the higher shoulder slots.
- For smaller child, use shoulder harness anchor B and the lowest shoulder slots.
- In order to protect your child from falling out, after your child is placed into the seat, check whether the shoulder and waist harnesses are at proper height and length.

To Recline Backrest

See images **22** - **23**

Calf Support

See images **24** - **25**

To Use Armbar

See image **26**

- The Armbar has 3 positions.

Brake

See images **27** - **28**

- Always apply the brake when the stroller is stopped. Push the stroller slightly to ensure the brake is engaged.

To Use Canopy

See image **29**

To Fold Stroller

See images **30** - **32**

- Please fold the hood before folding the stroller.
- Please remove the adaptors before folding the stroller.

To Use Rain Cover

See image **33**

- Before using the rain cover, the infant child restraint has to be fastened.
- When using the rain cover, please always check its ventilation.
- When not in use, please check that the rain cover has been cleaned and dried before folding.
- Do not fold the stroller after assembling the rain cover.
- Do not place your child into the stroller assembled with rain cover during hot weather.

To Attach Footmuff (May Not Be Included)

See images **34** - **44**

- Thread the buckle out of the corresponding slots of the footmuff. **38**
- Make sure the harness is adjusted properly and your child is snugly secured. The space between the child and the shoulder harness should be about the thickness of one finger. **42**

Use with Graco SnugLite Infant Child Restraint GC1817 (May Not Be Included)

See images **45** - **52**

When using with Graco SnugLite Infant Child Restraint, please refer to the following

instructions.

- Adjust the backrest to the lowest position and fold the canopy.
- Need to remove the arm bar before using adaptes.
- If you have any problems about using the infant child restraint, please refer to their own instruction manuals.
- Please do not fold the stroller when the infant child restraint is still attached.

Use with Graco Arris Carry Cot (May Not Be Included)

See images **53** - **56**

When using with Graco carry cot Arris, please refer to the following instructions.

- If you have any problems about using the carry cot, please refer to their own instruction manuals.
- Please do not use the product when the baby's head is lower than feet after attached carry cot.
- Always use the mattress when using the carry cot.
- Please don't fold stroller when attaching the carry cot.

Detach & Assemble Soft Goods

See images **57** - **65**

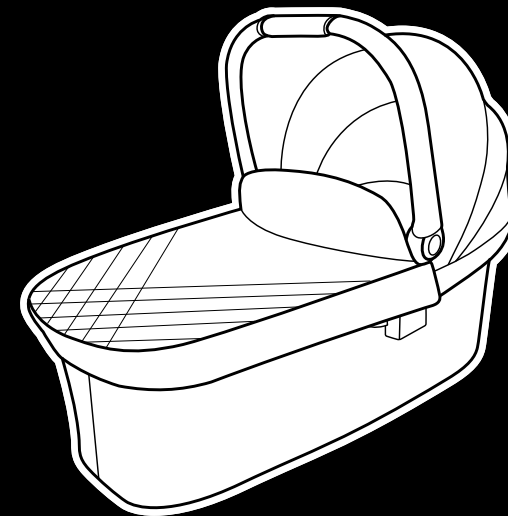
- Remove arm bar shown as **11**.
- To re-assemble seat soft goods, follow the steps above in reverse **65** - **57**



Arris™ Carry Cot

INSTRUCTIONS

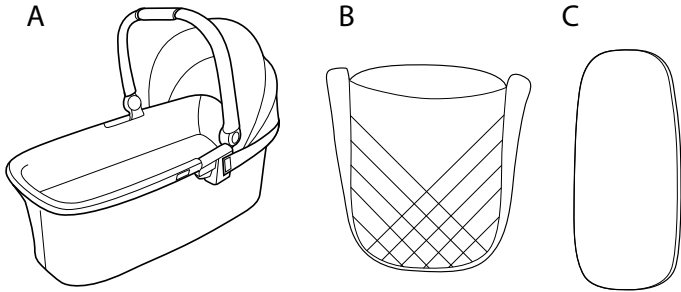
MAY NOT BE INCLUDED



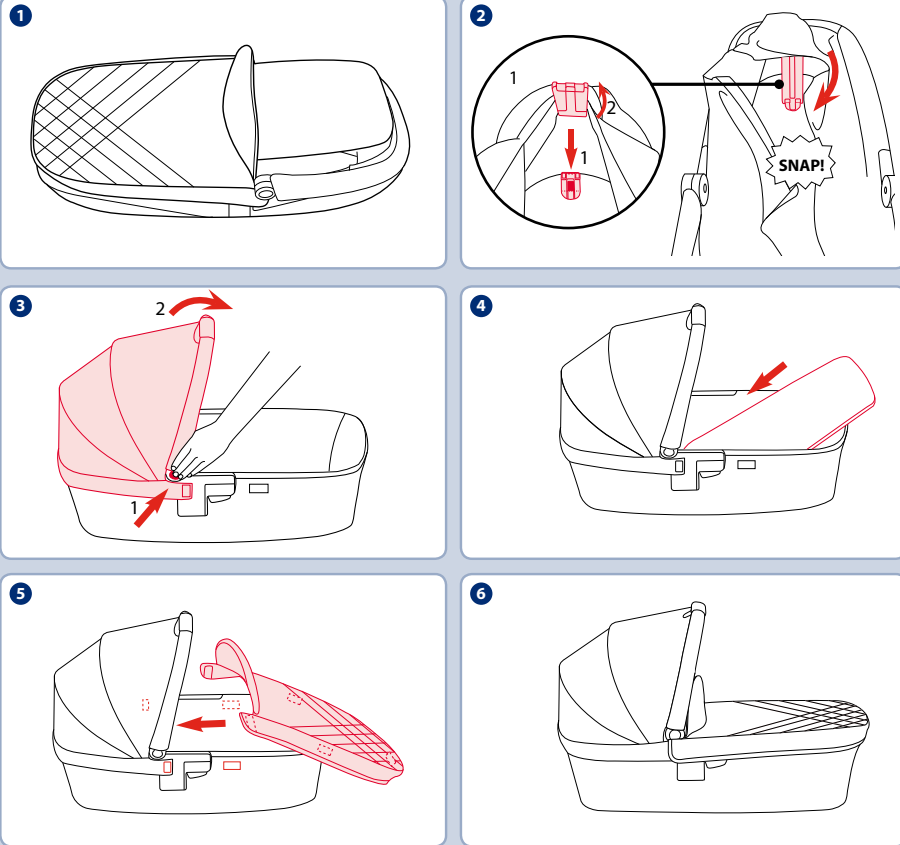
gracobaby.eu • gracobaby.pl

**IMPORTANT-READ CAREFULLY AND
KEEP FOR FUTURE REFERENCE.**

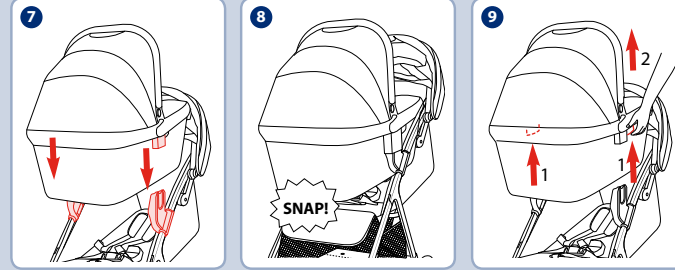
Parts list



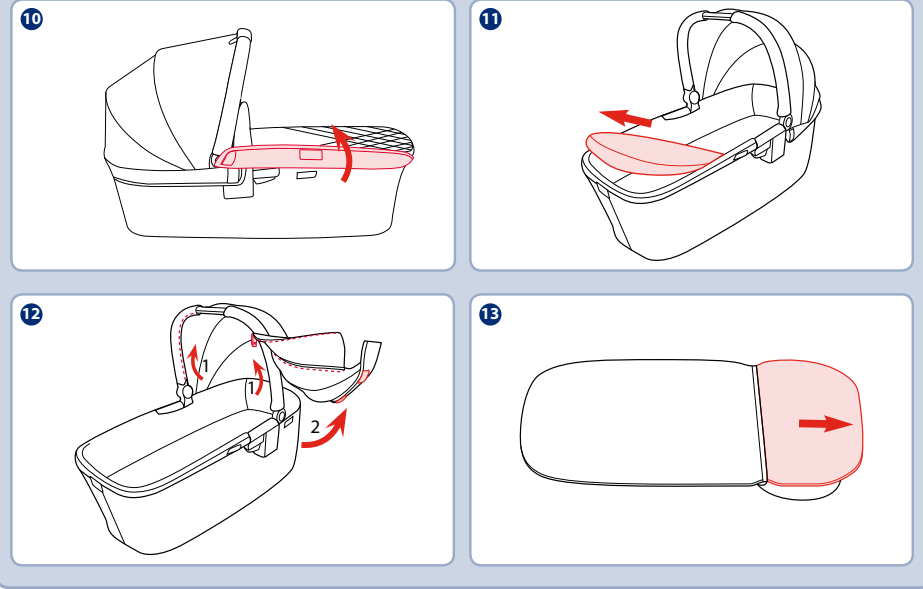
To Set Up Carry Cot



To Use Carry Cot On Graco Stroller Arris



Detach Soft Goods



EN WARNING

Complies to EN 1466:2023.

IMPORTANT - KEEP THESE INSTRUCTIONS FOR FUTURE REFERENCE

YOUR CHILD'S SAFETY MAY BE AFFECTED IF YOU DO NOT FOLLOW THESE INSTRUCTIONS.

This product is suitable only for a child who can not sit up unaided, roll over and can not push up itself up on its hand and knees. Maximum weight of the child: 9kg.

Only use on a firm, horizontal level, flat and dry surface.

Do not let other children play unattended near the carry cot.

Do not use if any part of the carry cot is broken, torn or missing.

Use only replacement parts supplied or approved by the manufacturer.

Be aware of the risk of open fire and other source of strong heat, such as electric bar fires, gas fires, etc., in the near vicinity of carry cot.

The handles and the bottom of the carry cot should be inspected regularly for signs of damage and wear.

DO NOT use or add any mattress other than the one supplied with the carry cot.

This carry cot is not intended for prolonged periods of sleeping.

Never use the carry cot on a stand.

The head of the child in the carry cot should never be lower than the body of the child.

Before carrying or lifting, make sure that the handle is in the correct position of use.

This product is only suitable for a child who cannot sit up unaided.

Do not place the carry cot near an open fire or other source of strong heat.

Do not add another mattress on top of the mattress provided or recommended by the manufacturers.

Be aware of the hazard of hitting the baby e.g. when putting on floor, going through the doors.

Do not leave anything in the carry cot that could present a danger of suffocation e.g. non-rigid toys, pillows...

Do not place the carry cot close to another product, which could present a danger of strangulation e.g. strings, blind/ curtain cords...

Overheating can endanger the life of your child! Take into account the ambient temperature and the child's clothing and ensure that the child is not too cold or too warm.

Ask a health professional for advice on safe sleeping.

CARE & MAINTENANCE

Clean the frame, plastic parts, and fabric with a damp cloth, but do not use abrasives or bleach. Do not use silicon lubricants as they will attract dirt and grime. Do not store the carry cot in a damp place.

To ensure long-lasting use, wipe this product off with a soft, absorbent cloth after using it in rainy weather and before storing away.

Refer to the care labels attached to the soft goods for washing and drying instructions.

It is normal for fabric to color from sunlight and to show wear and tear after a long period of use, even when used normally.

For reasons of safety, only use Graco® replacement parts.

Check regularly if everything functions properly. If any parts are torn, broken, or missing, stop using this product.

Parts list

A Carry Cot Frame

B Carry Cot Cover

C Mattress Pad

Product Set Up

To Set Up Carry Cot

See images **1** - **6**

- Please check whether 2 support mounts are fixed correctly. **2**
- To release the support mounts, please see image **2** - 1
- To open the canopy, pull the canopy toward front **3** - 2 while pressing the buttons on the both sides. **3** - 1
- Always use the mattress when using the carry cot.
- Mattress cover can easily be removed to wash.
- Put the carry cot cover into the carry cot, then attach the hook and loop fasteners on the carry cot. **5**
- Using the carry cot cover in winter to give baby a warmer and more comfortable sleep environment.
- The completely assembled carry cot is shown as **6**

To disassemble the carry cot simply reverse the steps above.

Product Use

To Use Carry Cot On Graco Stroller Arris

See images 7 - 9

When using with Graco Stroller Arris, please refer to the following instructions.

- If you have any problems about using the carry cot, please refer to their own instruction manuals.
- Please do not use the product when the baby's head is lower than feet after attached carry cot.
- Always use the mattress when using the carry cot.
- Please don't fold stroller when attaching the carry cot.
- Place the carry cot directly down until it clicks into adapters. 7
- A click sound means carry cot assembled completely. 8

Remove Carry Cot

- Press release buttons on both sides of carry cot 9 - 1, and then lift it upwards. 9 - 2

Detach Soft Goods

See images 10 - 13

To re-assemble carry cot soft goods, follow the steps above in reverse 13 - 10.



Allison Baby UK Ltd

Venture Point, Towers Business Park Rugeley,
Staffordshire, WS15 1UZ

NUNA International B.V.

Van der Valk Boumanweg 178 C,
2352 JD Leiderdorp, The Netherlands

Customer Service

gracobaby.eu
www.gracobaby.pl

For UK and ROI
Customerservices.uk@gracobaby.eu
+44 0800 952 0063